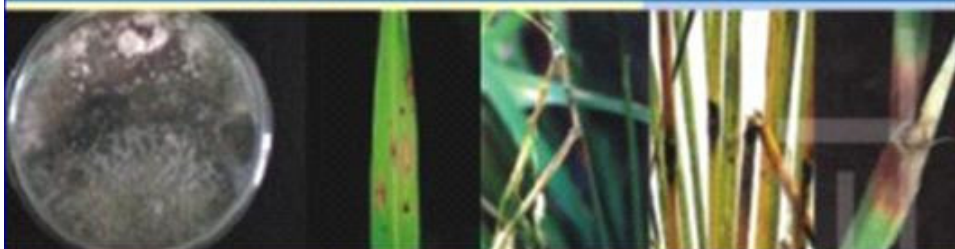


# SUDOCEL™

*Pseudomonas fluorescens*



Sudocel™ is manufactured from *Pseudomonas fluorescens* a natural soil inhabiting bacterium that controls many fungal diseases.

Sudocel™ is effective against foliar diseases like - **blast, sheath rot, seedling blight, brown spots and leaf spots**; soil-borne diseases like - **damping off, panama wilts** etc. Sudocel™ produces growth factors like IAA, which contribute to the vigorous growth of the crop.

#### Mode of Action

##### Protection & Prevention

This bacterium mainly inhabit root zone [rhizosphere] of the crop and their growth is highly influenced by the root exudates of the crop. *Pseudomonas fluorescens* produces siderospore, which chelates with iron and make it difficult for pathogenic organisms to proliferate by interfering with the germination of fungal spores. *Pseudomonas fluorescens* secretes an enzyme, which is capable of dissolving the cell walls of the fungus and forms a protective coat on the leaf surface.

##### Improves soil fertility

In the soil *Pseudomonas fluorescens* transforms proteins into Amino acids, reduces sulphur and decomposes cellulose. *Pseudomonas fluorescens* produces growth factors like IAA, which contribute to the vigorous growth of the crop, fixes atmospheric nitrogen nonsymbiotically and solubilises inorganic phosphate especially tri calcium phosphate.

#### CROPS

- Fruit crops** : GRAPES, GUAVA, SAPOTA, CITRUS, MANGO, POMEGRANATE, CUSTARD APPLE, COCONUT ETC.
- Field crops** : COTTON, PADDY, SORGHUM, SUNFLOWER, GROUNDNUT, POTATO, MUSTARD ETC.
- Vegetables crops** : TOMATO, CHILLY, BRINJAL, ONION, LADY'S FINGER ETC.
- Plantation crops** : CARDAMOM, TEA, COFFEE, BANANA, FLORICULTURE, HOME GARDENING ETC.



EXCEL INDUSTRIES LTD.

# SUDOCEL™

*Pseudomonas fluorescens*



#### Method of Application

**Seed Treatment** - Effectively controls seed-borne diseases. Soak the seeds in 1% solution, dry under shade and use for sowing.

**Seedling Root dip** - Dissolve 1kg of Sudocel™ in 50 liters of water. Dip the root portion of the seedling for 5 minutes and transplant thereafter.

**Soil Application** - Mix 2 kg. Sudocel™ with 100 kg of matured organic manure like Celrich™ and spread in one acre uniformly before sowing or transplanting.

**Spray Application** - Dissolve 1kg of Sudocel™ in 100 liters of water and spray on the crop as a preventive or curative treatment against diseases. One spray during vegetative stage and another before flower initiation.

#### Compatibility

Sudocel™ should not be mixed with any chemical pesticide, fungicide or fertilizer. Leave a gap of minimum 5-7 days before and after applications

#### Dosage

2.5g per liter or 500 - 750gm in 200-300 liters of water per acre spray

#### Storage

Keep in dry and cool place. Do not expose to direct sunlight or heat

#### Packing

Sudocel™ is available in 1kg and 250gms E-fluted Carton pack to ensure better product quality and shelf life

#### Shelf life

One year from the date of manufacture



IAP CONTROL PRIVATE LIMITED

Manufactured by



RomVijay Bioo Tech Pvt. Ltd

Kannikol,  
Pondicherry - 607402



Indian Society For Certification  
of organic products

Marketed by



EXCEL INDUSTRIES LTD.

164-87, S.V. Road, Jageshwar (W),  
Mumbai- 400102, India.  
Email: kovi@excelind.com